

Outdoor Recreation

Calendar of Events

January

- Numbers peaking for geese, cranes, and ducks.
- Wetlands fully flooded.

February

- Elk bulls drop antlers.
- Great-horned owls hatching.
- Large numbers of wintering waterfowl and cranes visible.

March

- Waterfowl are migrating north.
- Vernal pool wildflowers begin blooming.
- Hawks and herons begin nesting.
- Elk antlers begin to regrow. They are in 'velvet.'

April

- Songbirds are migrating.
- Wildflowers are abundant around vernal pools.
- Tule elk are calving.

May

- Shorebirds are migrating with breeding plumage.
- Wildflowers still spectacular.

June

- National Fishing Week.
- Tule elk are rubbing the velvet off their antlers.
- Shorebirds migrate north.

July

- Tule elk rut begins
- Fall shorebird migration begins south.
- Young birds fledge.

August

- Swainson's hawks have fledged and will form "kettles" over prescribed burned areas.
- Irrigated pastures attract ibis and long-billed curlews.
- Elk rut and bugling peaks.

September

- The elk rut continues.

October

- Sandhill Cranes begin returning in mid-October.
- Waterfowl hunting season opens.

November

- Aleutian Canada Geese arrive mid-month in Stanislaus County.
- Over 15,000 Sandhill Cranes are in the Grasslands by Thanksgiving.

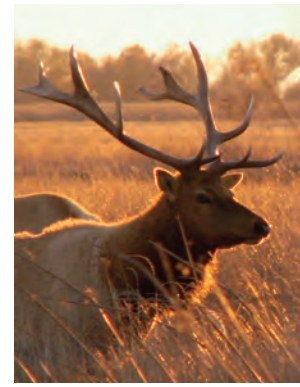
December

- Swans may arrive in small numbers by month's end.
- Watch for eagles, falcons, ferruginous hawks

To many around the world, Los Banos is a mecca of outdoor recreational opportunities. Within 8-10 miles you can indulge in hunting, fishing, boating, jet skiing, windsurfing, bird watching, ATV sports, hiking and sun bathing.

Los Banos can lay claim as home to the incredible Pacific Flyway. People from all over the world travel to view ducks, sandhill cranes and assorted birds as they winter over and migrate.

In addition you can take advantage of wildlife observation and photography opportunities that are unparalleled and participate in environmental education opportunities.



in California and almost extinct until 1974 when a herd of 18 elk was established at San Luis NWR. They have since thrived and are now periodically relocated throughout California to establish new

herds.

Another component of the Refuge are the upland habitats. These habitats feature saline or alkaline conditions due to the low rainfall and arid conditions that is prevalent in the Central Valley. Because of this, you can find botanicals such as native bunch grasses, forbs, native and exotic annual grasses and native shrubs. Visitors to this area are reported to encounter wildlife such as coyotes, dessert cottontail rabbits and ground squirrels. You could also see western meadowlarks, yellow-billed magpies and white tailed kites.

At this Refuge you will have the opportunity to choose from three auto tour routes with nature trails and observation decks to view and photograph wildlife and nature.



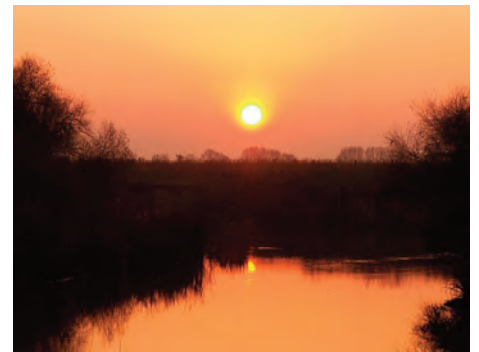
Los Banos Wildlife Area

This refuge was purchased in 1929 and was the first to be established in this state to manage habitat for wintering waterfowl. It has grown from 3000 acres to 6,217 acres of lakes, sloughs and managed marsh. There is a wide range of animals and over 200 species of birds. In-season hunting is limited to shotguns and archery equipment. Grassland Environmental Education Center is also located here and can provide educational tours. There are guided and self-guided tours and a hands-on learning center that will appeal to all ages.

San Luis

National Wildlife Refuge

San Luis National Wildlife Refuge is proud to have played such an important role in the recovery of the tule elk. This subspecies is found only



Photos Anna Brown



Open to the Public

72 Par Course • Pro Shop
Restaurants • Open Daily
Golf Carts & Driving Range

826-3637

29500 Bayview Road, Santa Nella
Located on West Side of Interstate 5 on Hwy 33



Sergio V Martinez
Realtor
DRE: 01430018
Cell: 408-781-9497
Direct: 209-509-5900
E-Mail: Sergiojmtz@sbcglobal.net

La Casita Realtors
864 5th St Los Banos, CA 93635
www.LaCasitaRealtors.com



Rosalyn Santiago
Broker/Owner
DRE: 01501503
Cell: 408-509-5032
Direct: 209-826-8227
E-Mail: rozsantiago@sbcglobal.net